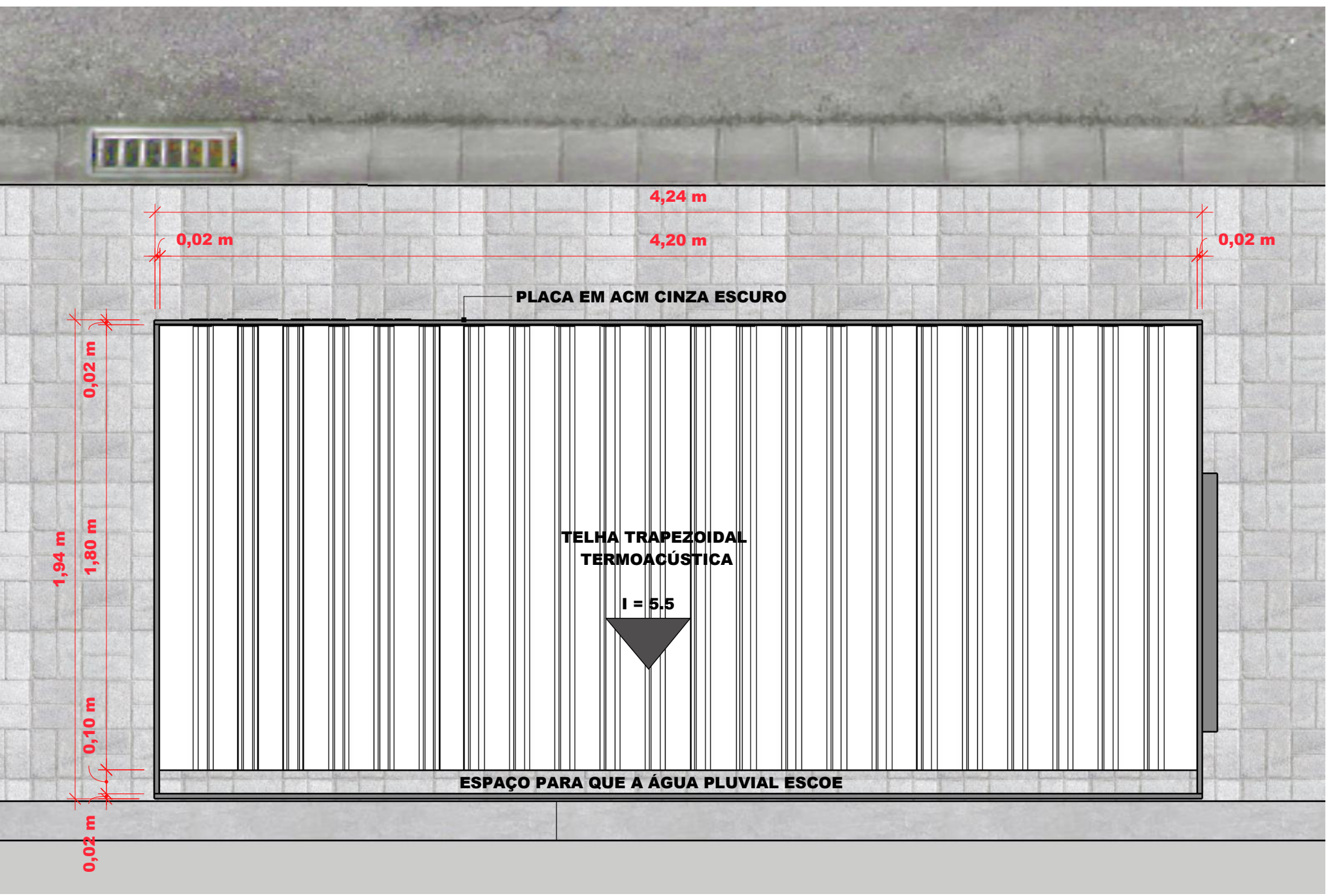
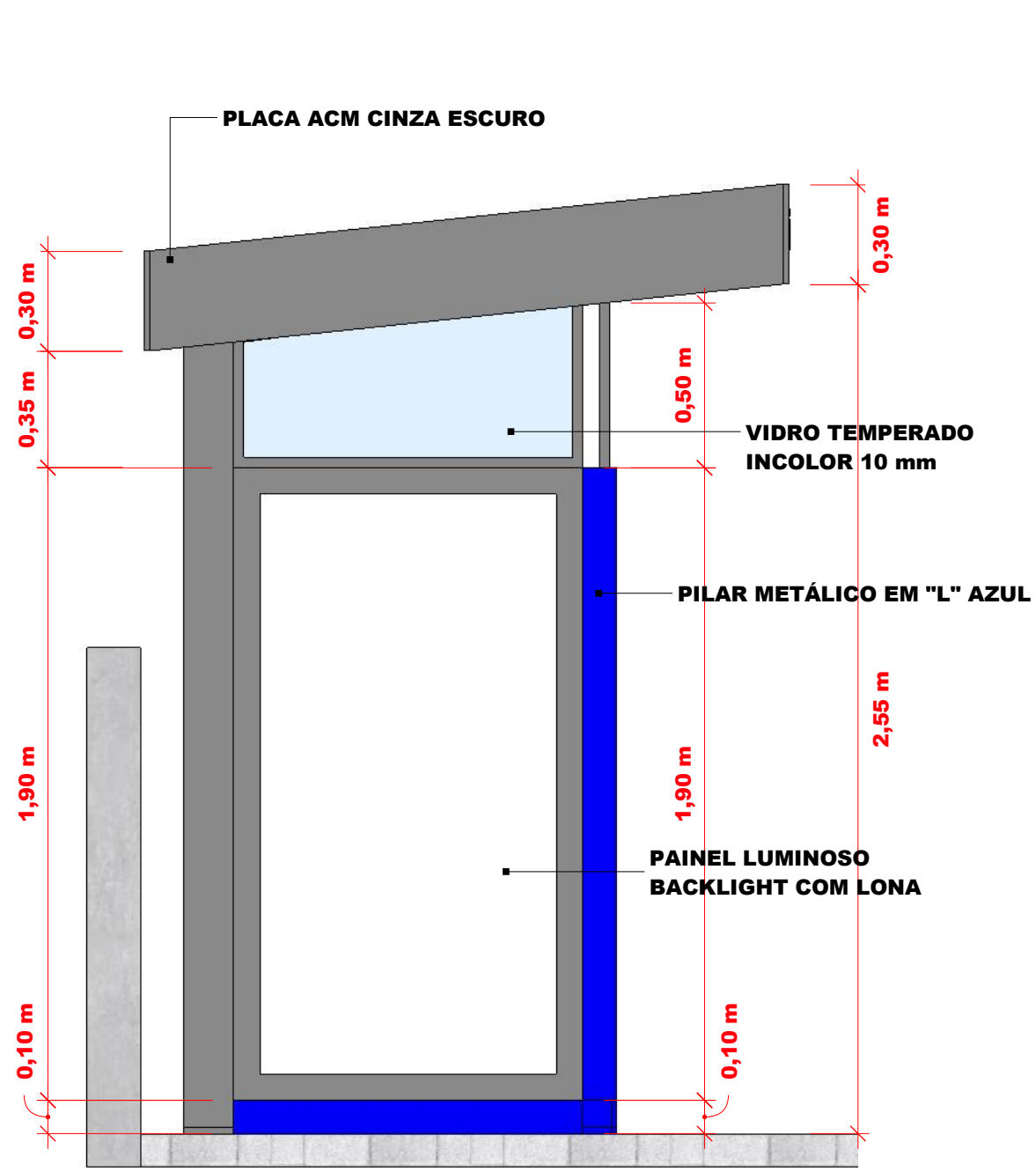


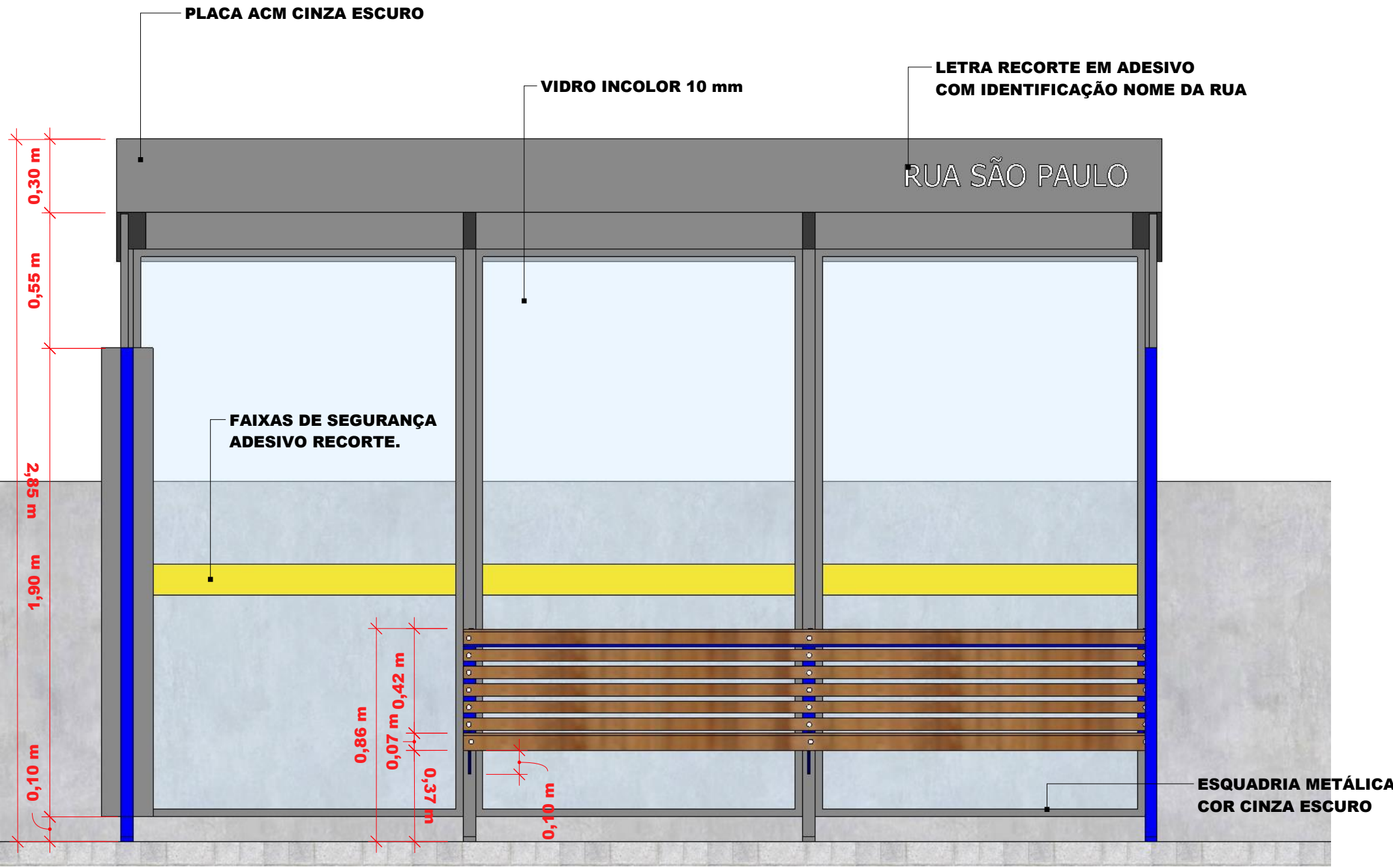
PLANTA BAIXA
ESCALA 1/20



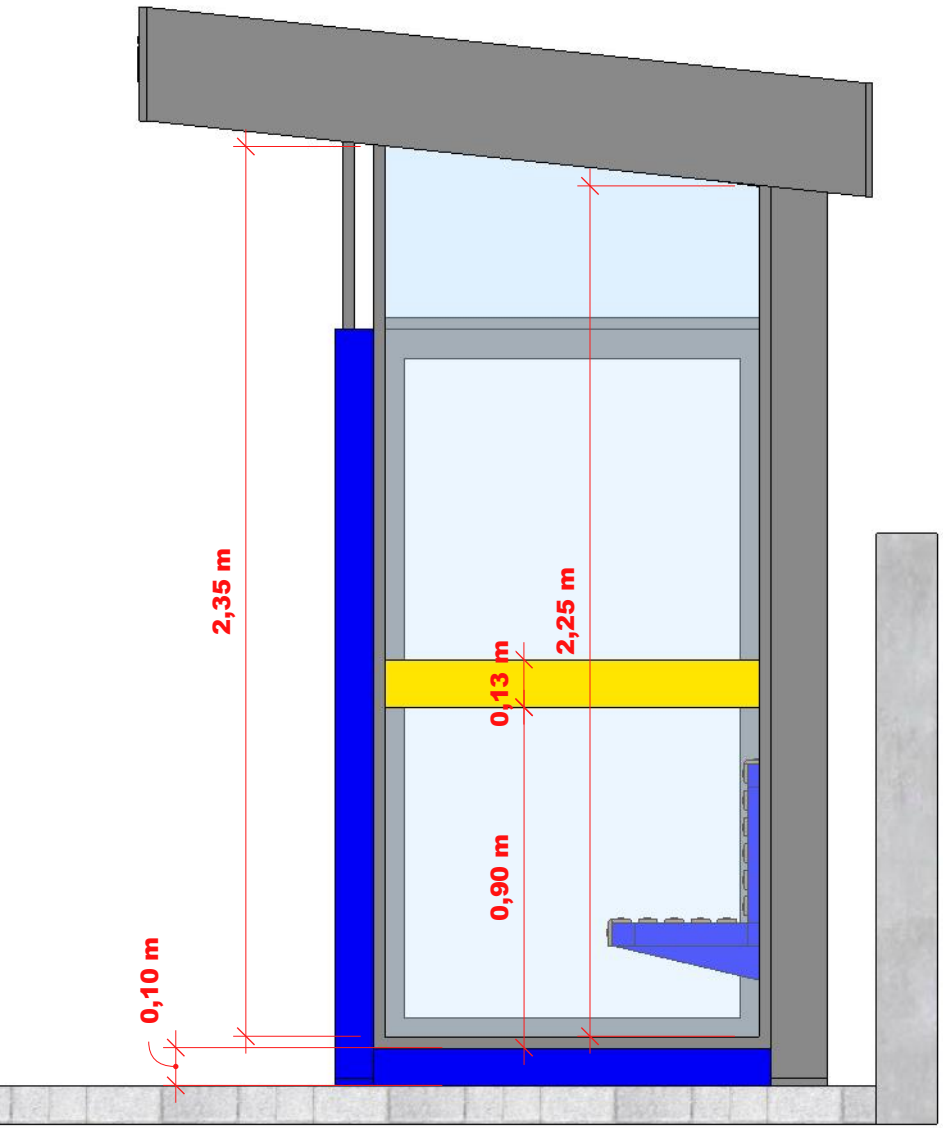
PLANTA COBERTURA
ESCALA 1/20



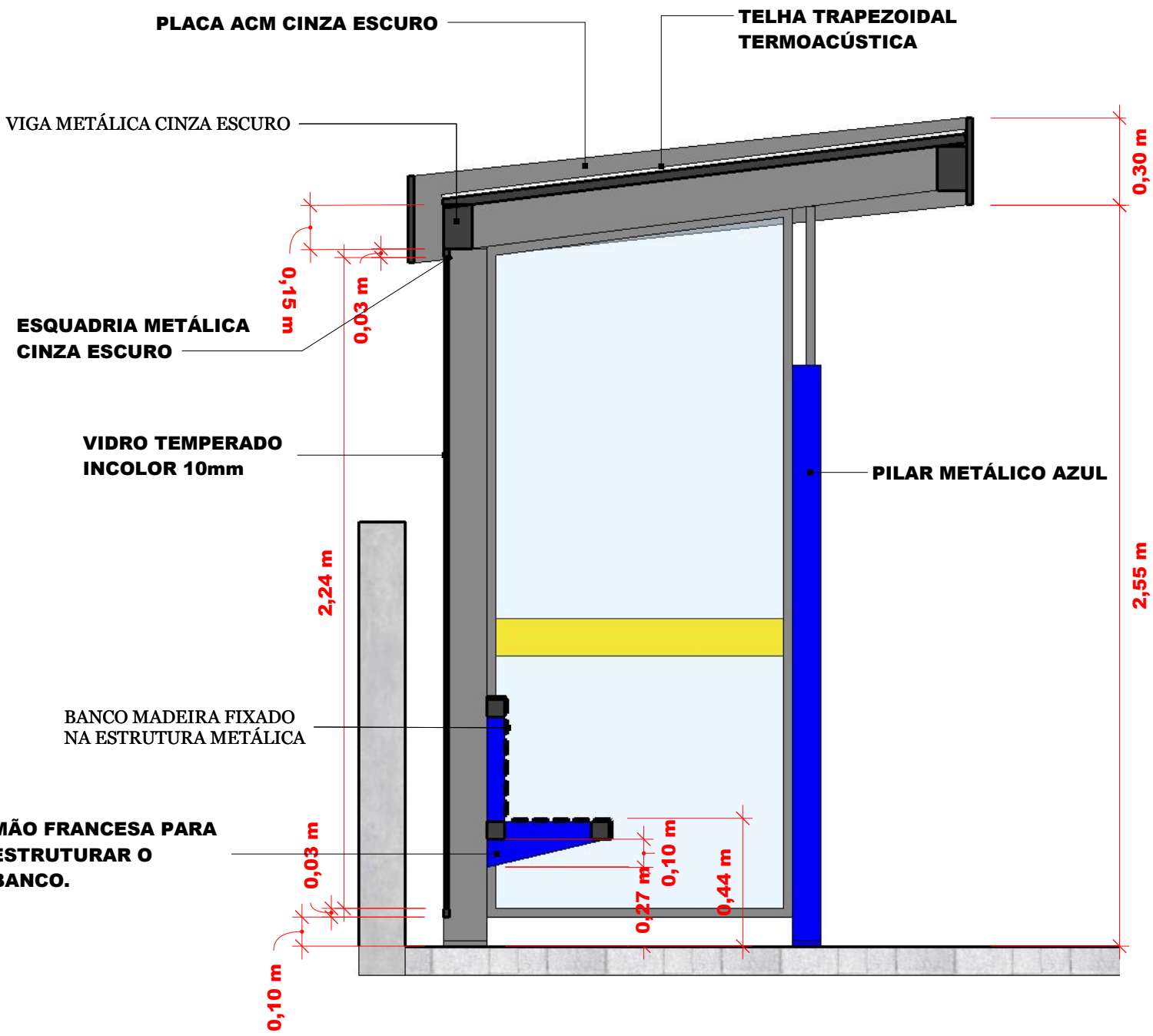
ELEVAÇÃO LATERAL E.
ESCALA 1/20



ELEVAÇÃO FRONTAL
ESCALA 1/20



ELEVAÇÃO LATERAL D.
ESCALA 1/20

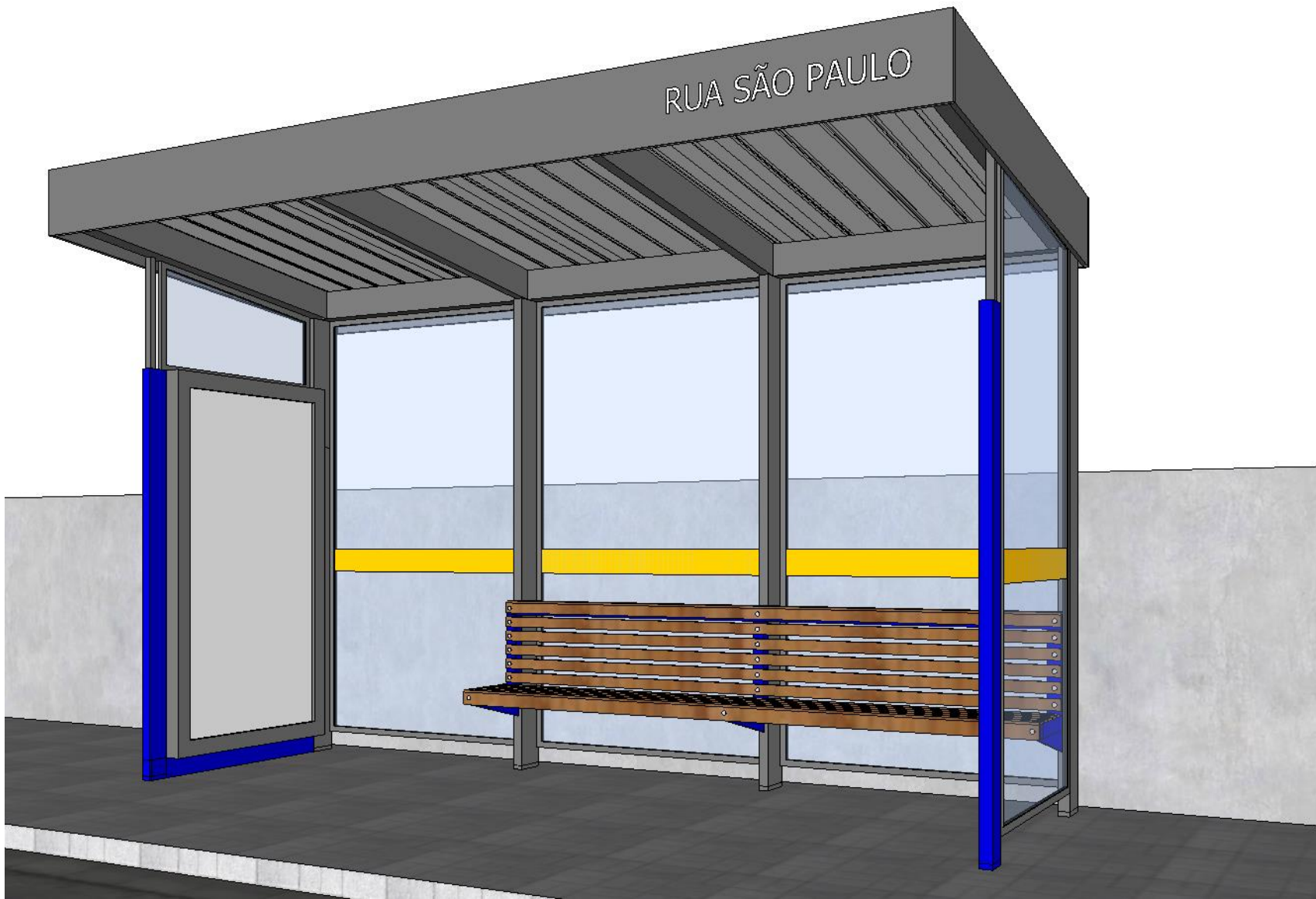


CORTE LATERAL
ESCALA 1/20

CARIMBOS APROVAÇÕES:

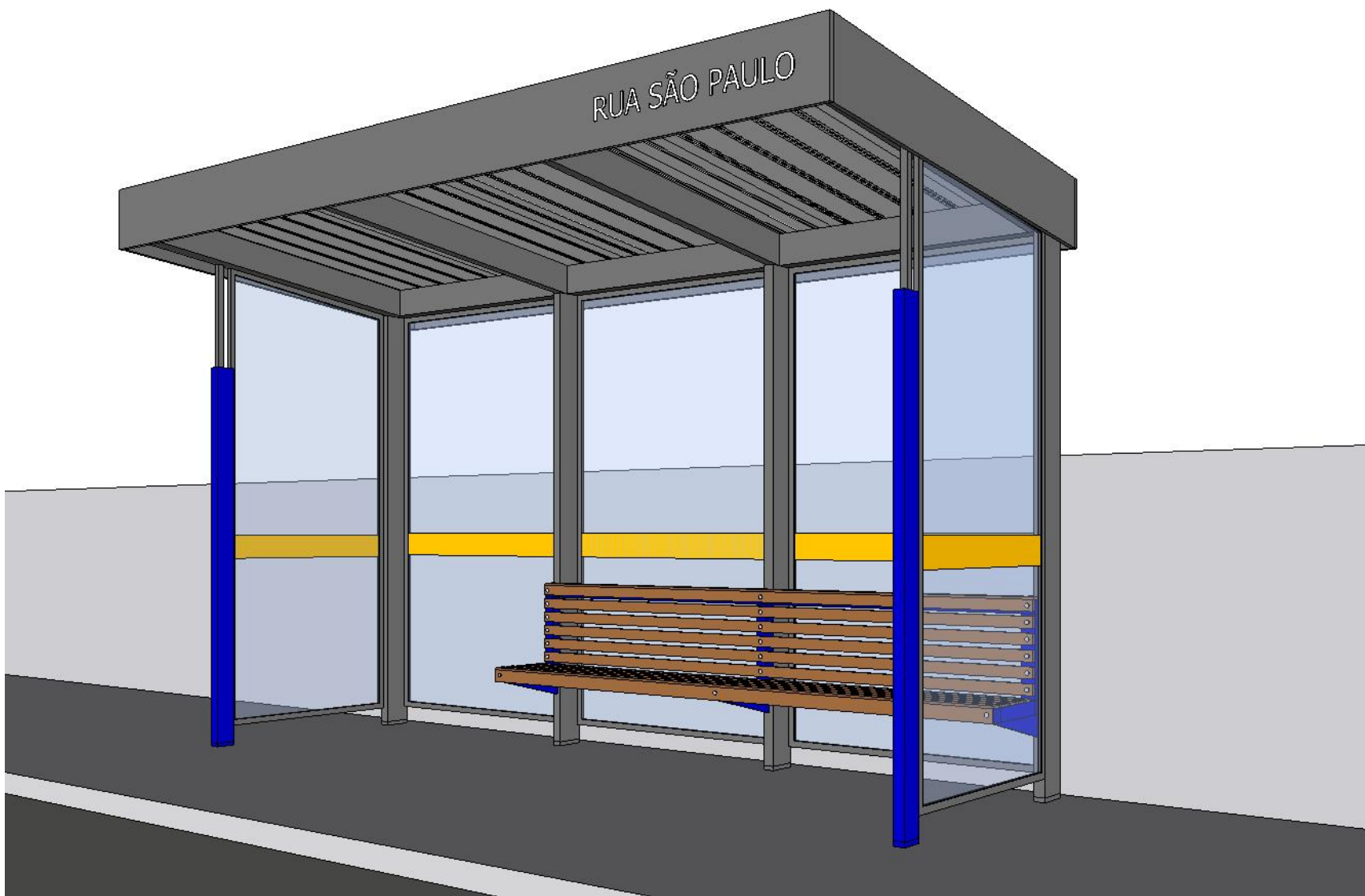


OBRA:	PONTO DE ÔNIBUS - PROJETO BASE		
LOCAL:	FRANCISCO BELTRÃO - PR	ÁREA TOTAL MÓDULO:	8.05 m ²
		DATA:	27/04/2020
RESPONSÁVEL TÉCNICO	DALCY SALVATI Arquiteto e Urbanista - CAU A3511-4		
PROPRIETÁRIO	MUNICÍPIO DE FRANCISCO BELTRÃO 77.816.510/0001-66		



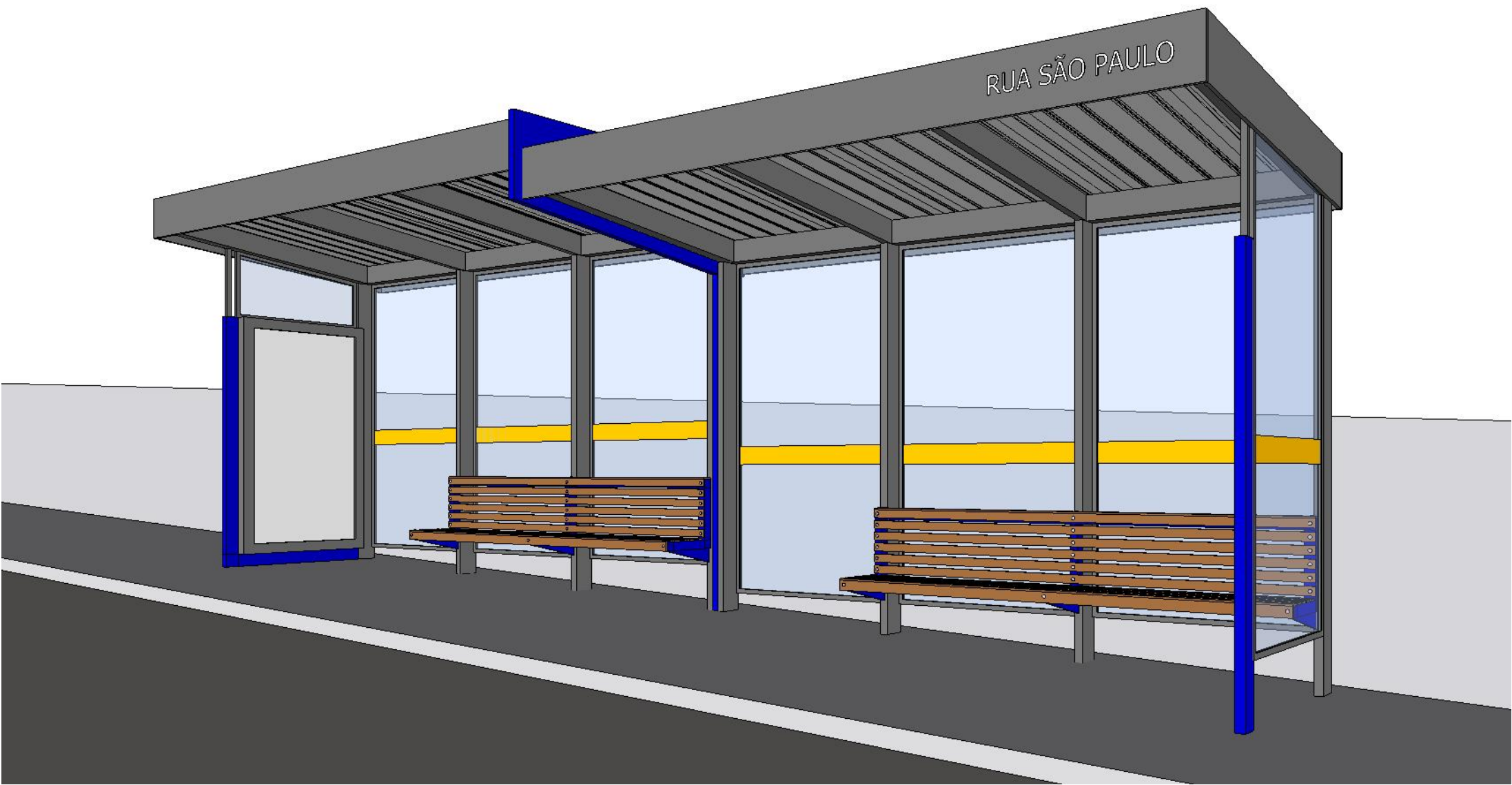
MODELO P01FB

1 módulo (4,24m x 1,90m) com vidro temperado e painel backlight.



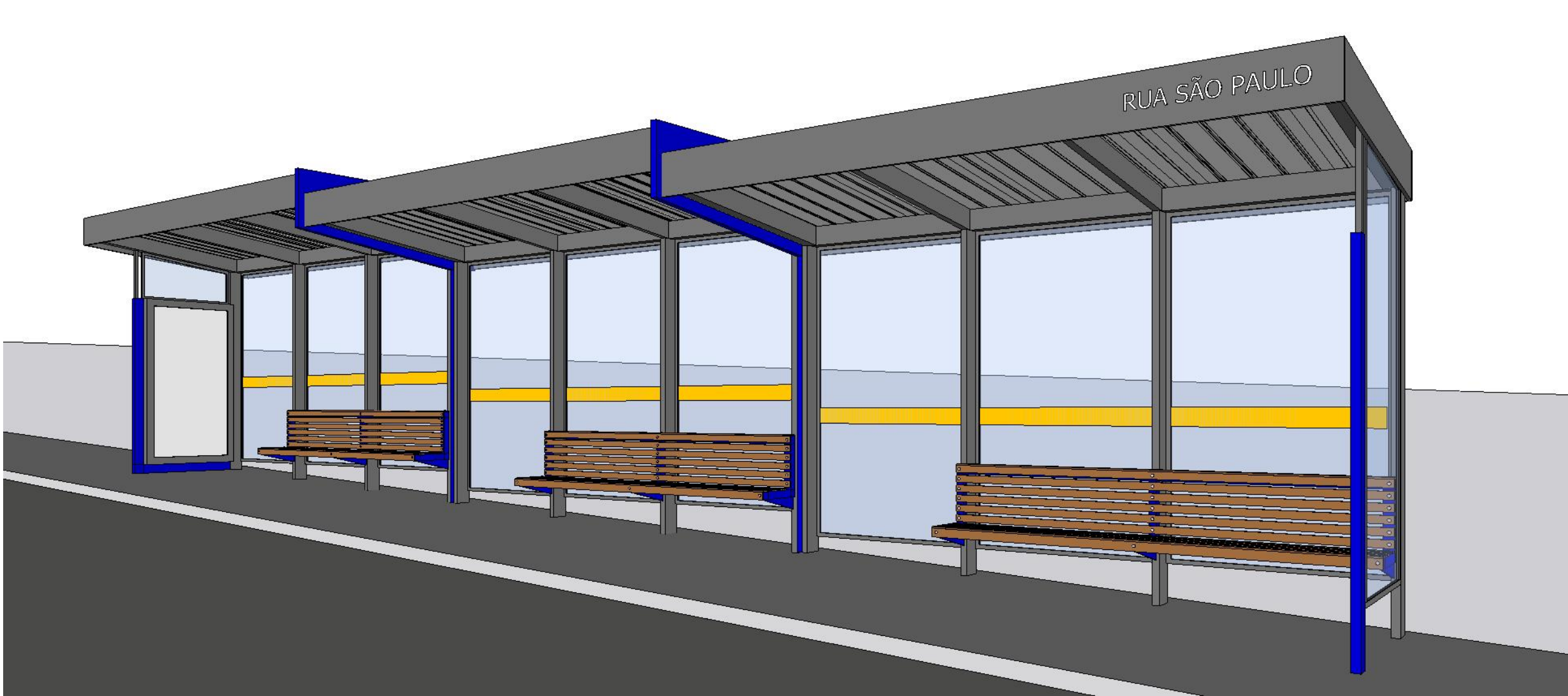
MODELO P02FB

1 módulo (4,24m x 1,90m) com vidro temperado.



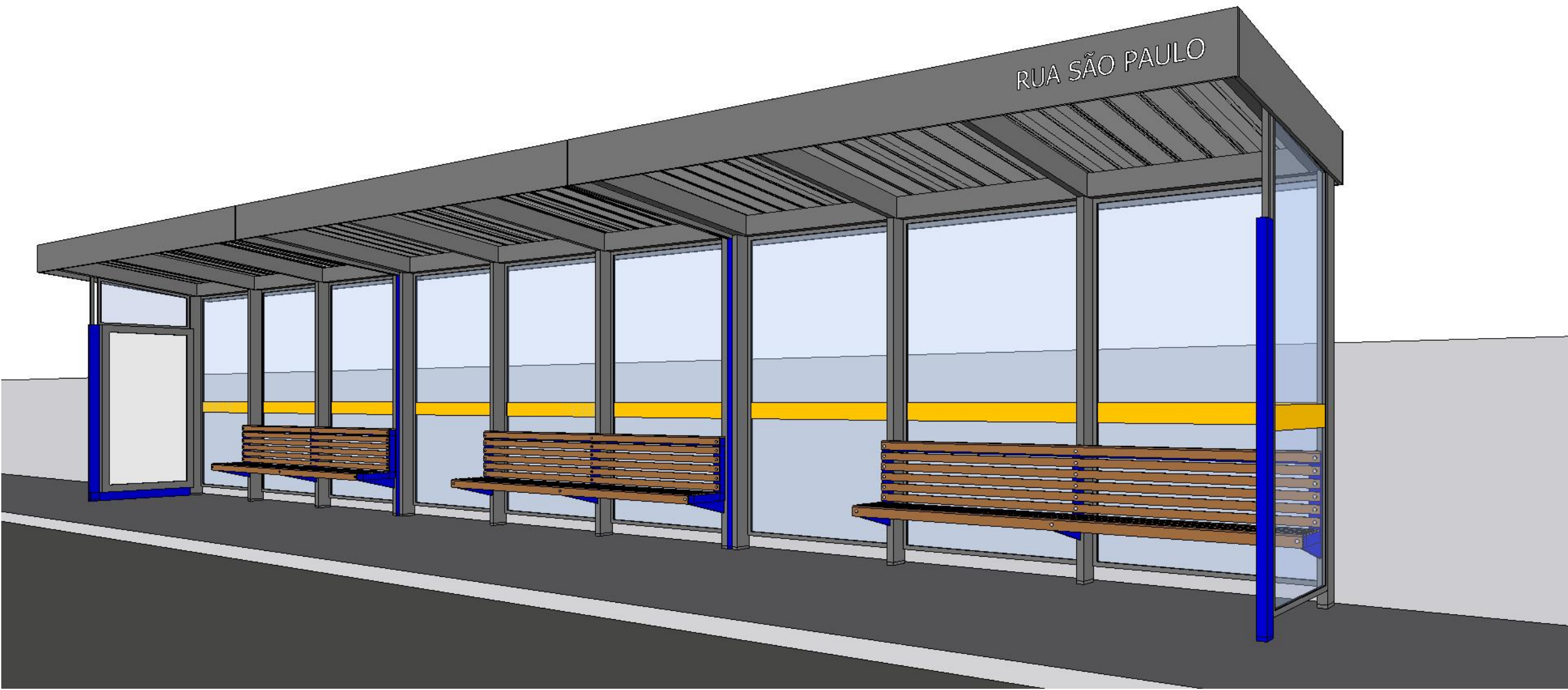
MODELO P03FB

2 módulos (8,49m x 1,90m) com vidro temperado e painel backlight.



MODELO P04FB

3 módulos (12,74m x 1,90m) com vidro temperado e painel backlight.



MODELO P05FB

3 módulos (12,74m x 1,90m) com vidro temperado e painel backlight.



Prefeitura de
FRANCISCO BELTRÃO

OBRA: PONTO DE ÔNIBUS
LOCAL: FRANCISCO BELTRÃO - PR

ÁREA TOTAL MÓDULO: 8.05 m²
DATA: 27/04/2020

RESPONSÁVEL TÉCNICO
DALCY SALVATI
Arquiteto e Urbanista - CAU A3511-4

PROPRIETÁRIO
MUNICÍPIO DE FRANCISCO BELTRÃO
77.816.510/0001-66